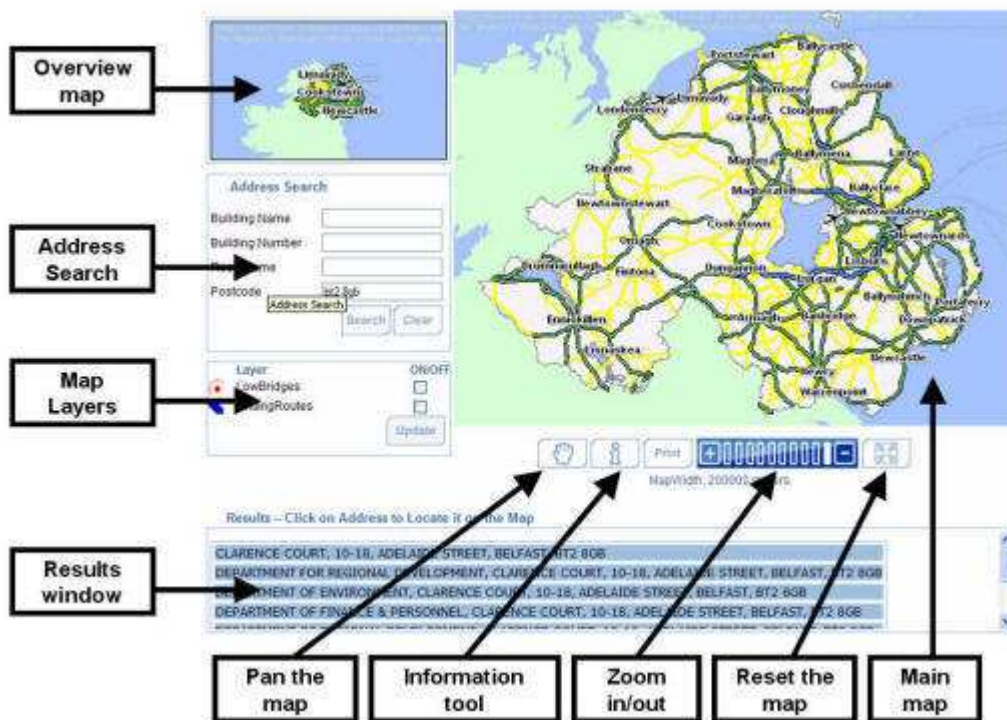


This help page provides instructions on how to use the Roads Service interactive map.



Overview map

The overview map shows the location detailed in the main map in relation to its surrounding area.

Address Search

Address Search allows for a full or partial address search to be carried out. When address details are entered a list of matching addresses are displayed in the results window. By clicking on the appropriate address record the main map zooms and centres on the chosen location. Users can enter building name, building number, road name, or postcode. Alternatively a combination of these values can be entered.

Map layer manager


Map layer manager allows the user to select the type of information that is displayed on the main map. Place a tick in the box in the 'ON/OFF' column next to the selected layer name. (eg. if you want to see the location of 'Low Bridges' tick the box beside that name) Click the Update button. The selected items will appear on the map.

Results Window

The results window will show the output from the 'Address Search' or the 'Information Select' tools.


Pan the Map

The pan function allows the user to move the map in any chosen direction. To operate the


map-pan function click on the pan button  once. Click on the main map screen and while holding the left mouse button down, drag the cursor across the screen within the main map area. When the left mouse button is released the map will re-draw.

Information Select

This tool allows you to call up any information relating to a selected point / feature on the

map. Click on the Information selection tool  Click on an item on the map (any item that is made visible using the layer manager). Any information about this item will be displayed in the Results window.

Zoom in/out

There are two ways of zooming-in. The first method is to use the zoom in button  To operate, click the zoom in button once. The map will then zoom in and be centred on the middle of the screen. Successive clicks will zoom in the map further, all the while decreasing the map width. An alternative method of zooming-in is to click on the zoom-bars



Each bar represents a different map width. To operate, click on one of the bars and the map width will change accordingly.

Reset the Map

This tool allows the user to quickly zoom out to see the whole of Northern Ireland. The function can be used at any time and at any map width. To operate, click on the 'Reset Map'

button 